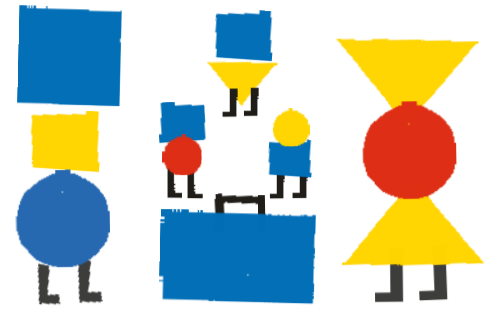
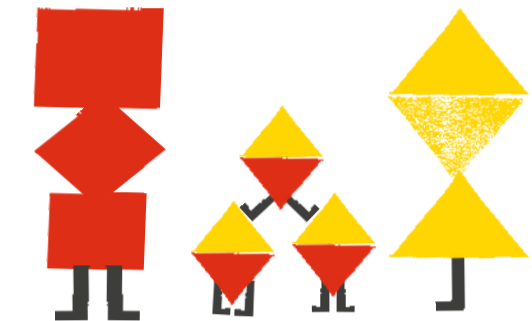


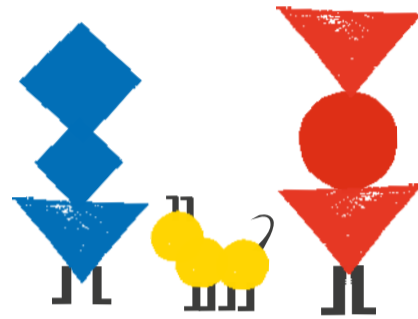
ADOPTIVE FAMILIES



BICULTURAL FAMILIES



MULTIPLE-BIRTH FAMILIES



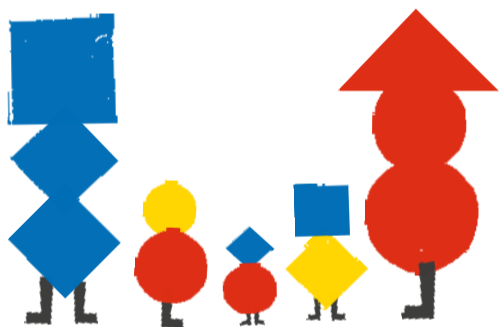
FAMILIES DEALING WITH INFERTILITY



FAMILIES WHO HAVE LOST A CHILD



WIDOWED FAMILIES



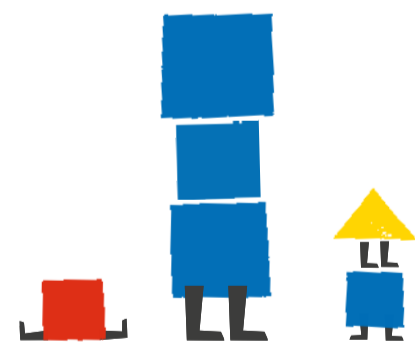
BLENDED FAMILIES



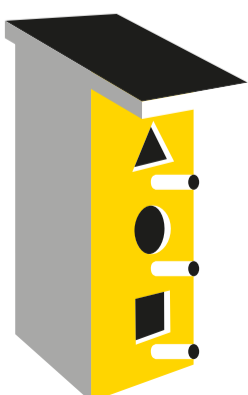
RAINBOW FAMILIES



FOSTER FAMILIES



SINGLE-PARENT FAMILIES



DIVERSE FAMILIES